

## ALUMINUM DOOR (LEVEL 7-8)

PART#: DOOR\_AND\_FRAME\_ASSEMBLY\_ALUMINUM\_L7-8

PRODUCT LINE: DOORS

### DESCRIPTION

The TSS Level 8 Aluminum Door offers the ultimate protection in ballistic resistance. Available as a 3" face narrow stile door, this door allows for a full vision look with superior protection. Aside from the ballistic protection, the TSS Aluminum Door can also be packaged as a storefront. The hardware provided for the TSS Level 8 Aluminum Door must be ordered with this door. Due to the 4" thick stiles of the door, the hardware TSS provides has been customized to fit this door. Any other hardware is incompatible with this door.

### OPTIONS

- Max Size: 3'6" X 9' 0" Door
- 3'0" X 7' 0" Door Level 8 Door Weight: ~500 Pounds
- Max Glazing Thickness: 2 1/2"
- Minimum Door Opening for ADA Compliance: 37 1/2"
- Door Thickness: 4"
- Door Lites Available in GCP Only
- Available in Full or Half Vision
- Designed for Exterior or Interior Use
- Clear or Dark Bronze Anodized, Custom Anodizing & Paint Available
- Standard Lockset:
  - A. Exit Device: Von Duprin QEL33ANL-OP W/ Best Core
  - B. Power Supply: Schlage PS902-2RS 12/24 VDC
  - C. Maglocks are an alternative to the Von Duprin Exit Device
- Standard Hardware:
  - A. LNC 4040XPRW/PA/ALUTBSRT
  - B. SL27 Continuous Hinge with Lead Lined Leafs & ATW 8 for Power Transfer (Level 1- 8)
  - C. Rockwood 12" Thru-Bolt Door Pulls

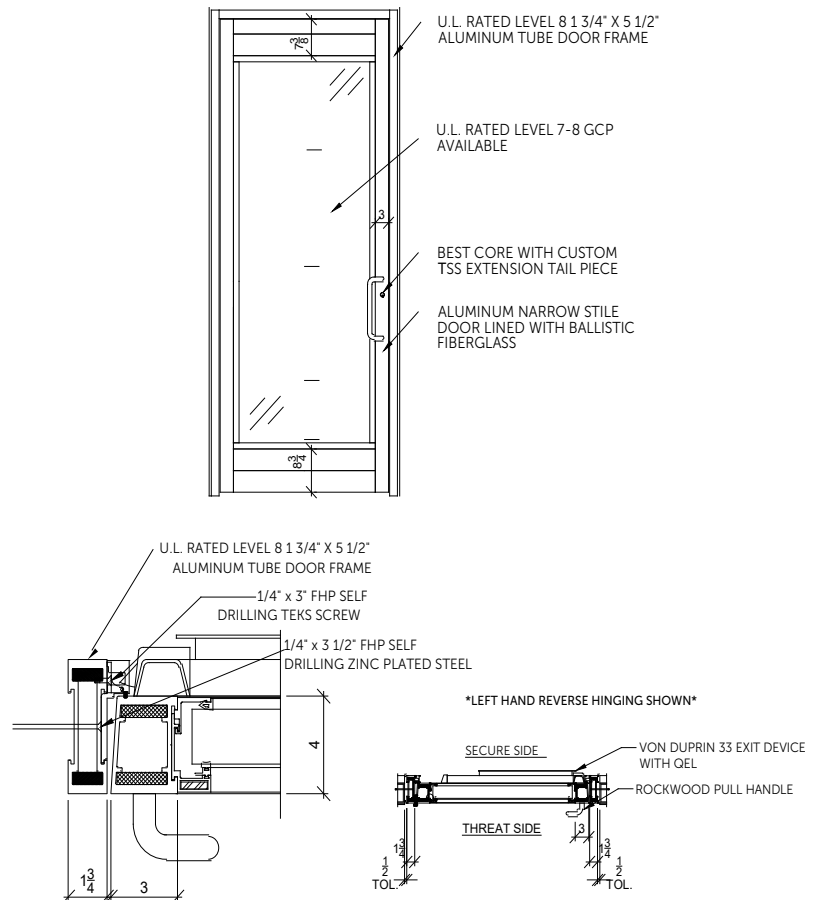
### RATINGS

- Glazing With U.L. Levels 7-8
- Aluminum Door (Levels 7-8)
- Aluminum Door BL 5.5 Framing (Levels 1 -8)

### STANDARDS

- NSI Z971-1984 Safety Glazing Materials for Building
- ASTM C 1172 Standard Specification for Laminated Architectural Flat Glass
- Underwriters Laboratory 752 Standard for Bullet Resistant Equipment
- ASTM B 209/B 209M Standard Specification for Aluminum and Aluminum Alloy Sheet and Plate

### LEVEL 8 ALUMINUM DOOR



### ALUMINUM STOREFRONT WITH LEVEL 8 ALUMINUM DOORS

