

## TRANSACTION DRAWER

PART#: TRANSACTION\_DRAWER  
PRODUCT LINE: ACCESSORIES

### DESCRIPTION

The TSS transaction drawer is an ideal solution for drive-thru and walk-up service in both interior and exterior settings. It is weather-resistant, and a Lexan™ lid allows for a clear view of the drawer's contents while preventing direct entry of outside air. Recommendations for this solution are businesses that prefer for employees to have visibility of cash or products inside the drawer before opening. This drawer can be placed in a wall to a max thickness of  $4\frac{13}{16}$ ". In the full open position, the drawer can extend to  $14\frac{1}{2}$ ".

### OPTIONS

- Stainless Steel Finish
- Exterior or Interior
- Delivered Assembled, Ready for Installation

### SIZE

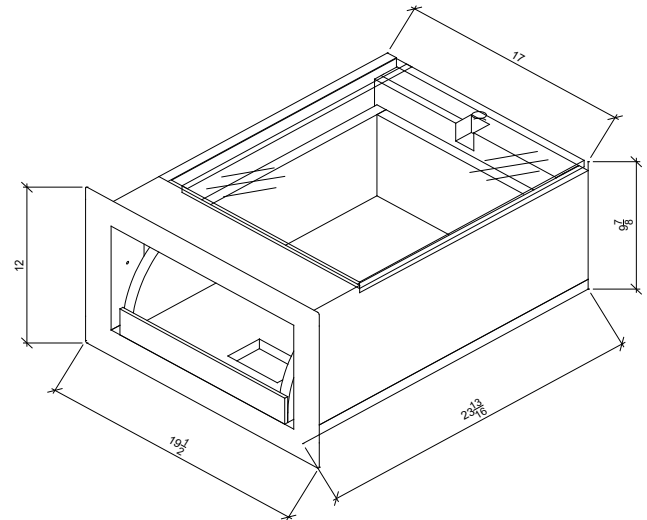
- 17" W x 9 7/8" H x 23 13/16" D

### RATINGS

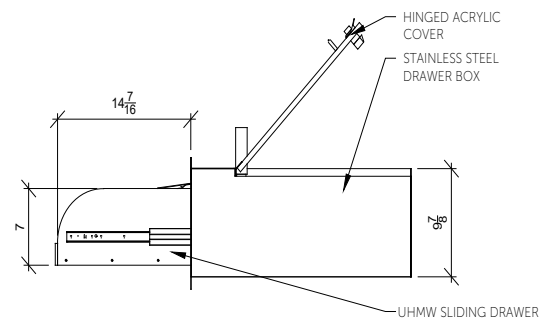
- UL 752 Levels 1-3

### STANDARDS

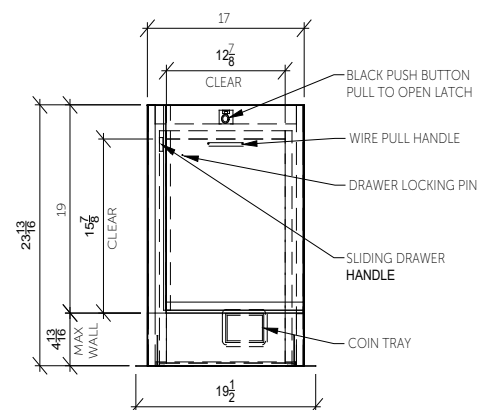
- Underwriters Laboratory UL 752 Standard for Bullet Resistant Equipment
- ASTM A36/A36M-08 Standard Specification for Carbon Steel
- ASTM A 666 Standard Specification for Annealed or Cold-Worked Austenitic Stainless Steel Sheet, Strip, Plate,



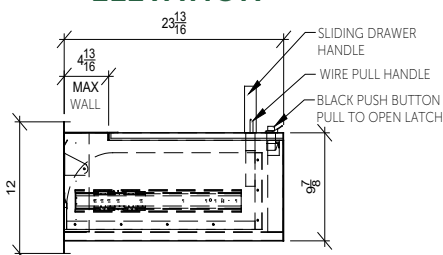
### FULL OPEN



### PLAN



### ELEVATION



### ELEVATION

