

RECESSED CURRENCY TRAY

PART#: RECESSED_CURRENCY_TRAY

PRODUCT LINE: ACCESSORIES

DESCRIPTION

The TSS Recessed Currency Tray is designed to achieve maximum security while promoting quick and easy transactions for your customers. Every tray is constructed of 18-gauge stainless steel with a #4 finish and has joints that have been welded and ground smooth. All trays can be retrofitted into your existing system or included in a new counter design, with custom sizes often available. This tray works great for passing paperwork, passports, currency, and credit cards. This product can achieve UL levels 1 through 8 ballistic resistance with the addition of a TSS bullet trap that incases the tray in a protective shell to prevent projectiles from penetrating.

SIZE OPTIONS

- 12" x 8" x 1-1/2"
- 14" x 8" x 1-1/2"
- 16" x 8" x 1-1/2"
- 12" x 10" x 1-1/2"
- 14" x 10" x 1-1/2"
- 16" x 10" x 1-1/2" (STOCK SIZE)

Please inquire for custom sizes.

(Any Tray with the TSS Bullet Trap Option Has A Minimum Thickness of 1 3/4")

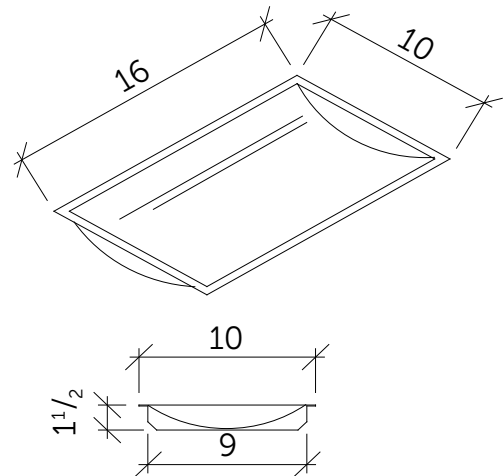
RATINGS

- U.L. Level 1-8 (With Bullet Trap)

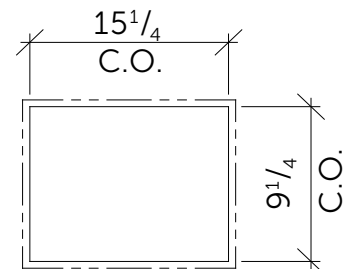
STANDARDS

- U.L. 752 Standard for Bullet Resistant Materials
- ASTM A 666 Standard Specification for Annealed or Cold-Worked Austenitic Stainless Steel Sheet, Strip, Plate, and Flat Bar

16" X 10" X 1 1/2" RECESSED TRAY



CUT-OUT DIMS FOR 16 X 10 TRAY



16" X 10" X 1 3/4" RECESSED TRAY WITH BULLET TRAP

